



Genesis Sermon Series
Forefathers of Our Faith

FILLING THE VOID

Genesis 29-30:24

Ps Gloria Pereira



ABRAHAM

Starter of Faith

Gen 12- 25

ISAAC

Son of Faith

Gen 25 - 26



JACOB

Striver of Faith

Gen 27 - 36



JOSEPH

Savior of Faith

Gen 37 - 50

FILLING THE VOID

Scripture Text: Genesis 29-30:24

Sermon
Notes

SUMMARY STATEMENT

No amount of love, success, or control can fill the void in the human heart—only God can satisfy our deepest longings with His faithful, personal presence.

INTRODUCTION

Prelude – Patterns of Parallels & Reversals (Genesis 29:1–15)

1. Jacob: Filling the Void with Love

2. Leah: Filling the Void with Motherhood

3. Rachel: Filling the Void with Control

CONCLUSION

God: The Only One Who Can Fill the Void

View the sermon slides here: <https://bartley.ch/Genesis29to30>

Sermon Discussion Questions for Missional Cells

1. What's one thing you thought would make you feel deeply fulfilled—but didn't quite deliver?
2. Where in your life right now are you most tempted to fill a void with something other than God?
3. What would it look like for you to shift from strife and striving to surrender in that area?
4. How can praising God in the middle of pain bring perspective and healing? How would you like to respond to God today?

ANNOUNCEMENTS (1)

BCC 46TH ANNUAL GENERAL MEETING ON 18 MAY 2025 @1.30PM

I) FULL MEMBER, please note the following:

1. Notice of AGM was mailed out to all ELIGIBLE MEMBERS on 23 April. If you have not received the Notice of AGM, please email to agm@bartley.org.sg to request for a hardcopy.
2. Respond/RSVP opened till 15 May/1.30pm via link: <https://bartley.ch/AGM2025-Registration> (Please RSVP, even if you are unable to attend)
3. AGM documents are available at <https://bartley.ch/AGM2025-Documents> till 18 May 2025.
4. Proxy form must be mailed to church office at 4 How Sun Drive, Singapore 538526 or deposited into designated boxes in church by 15 May 2025/1.30pm.

II) ASSOCIATE MEMBERS & NON-MEMBERS

BCC Associate Members and Non-Members are welcome to attend the AGM as observers in person or via live streaming. Please register via the link or QR code here.



or via: <https://bartley.ch/AGM2025-ObserverRegistration>

Those attending in person – Lunch will be provided ONLY for those who pre-order.

Those attending via live-streaming – link will be sent to you on 15 May (Thursday).

CHILDREN SUNDAY SCHOOL- MAY MISSION MONTH FIELD TRIPS

There will be **NO KJ Classes on the following dates for the different levels.** *Children who did not sign up for the field trip will worship with their parents in the Main Auditorium.*

1. **11 May 2025 - P1 & P2**
2. **18 May 2025 - K1 & K2 / P3 & P4 and P5 & P6**

MISSION OFFICE: NEW MISSIONARY



JOHN WONG
MISSIONS PERSONNEL CODE: "JOW"

PRAY WITH ME

- *Health: Pray for protection and strength amidst struggles with an autoimmune condition.*
- *Ministry: Pray for God's wisdom and grace to build meaningful connections with student athletes.*

The Missions Office is excited to welcome our newest Missions Personnel, **John Wong**, who is serving with **Fellowship of Christian Athletes**. John is reaching out to student athletes—building meaningful relationships and sharing the love of Christ.

Let us uphold him in prayer for good health, renewed strength, and God-given wisdom as he makes an impact in the lives of young athletes.

To learn more about supporting John visit:
<https://www.bccmissions.com/johnwong>

ANNOUNCEMENTS (2)

FELLOWSHIP LUNCH BY MISSIONAL CELLS

Please be informed there will not be any fellowship lunch for this Sunday.

CLOSURE OF CHURCH OFFICE

Please be informed that the church office will be closed on Tuesday, 13 May in view of Monday, 12 May is a Public Holiday.

CONGRATULATIONS

We rejoice with the following couples on their holy matrimonies on 10 May 2025: -

1. Luke Chua & Janice Loh. Congratulations to Janice's parents, Jimmy & Alice Loh.
2. Joshua Leong & Shin Kit. Congratulations to Joshua's mother, Jenny Leong.

FEAST WITH LOVE DURING THIS MOTHER'S DAY WEEKEND ❤️👩

Every order from Fong Fu catering, you're not just enjoying a delicious meal 🍽️ you're sharing hope with those in need. ❤️ Simply quote "feastwithlove" when ordering, and a portion of your order will go towards supporting BCCS programmes for their beneficiaries.



BCCS charity partnership with Fong Fu

SERVICES OFFERED:

1 CATERING
Customized solutions for event and gathering



2 MINI BUFFET
Compact, flavorful options for smaller groups



3 BENTO SERVICE
Convenient, pre packaged meals



4 TINGKAT SERVICE
Traditional, multi-tiered meal services



Quote "feastwithlove" during ordering

Campaign period 1 May to 31 July 2025
Order via: www.fongfu.com.sg when placing your order

Bartley Community Care Services **FOR EVERY ORDER**

- ♥ 5% of orders under \$200 go to BCCS
- ♥ 10% of orders above \$200 go to BCCS

Every bite you enjoy helps BCCS bring hope to those in need.
Learn more FB/IG @bartleycare | website link: www.bccs.org.sg

✨ **Services: Catering | Mini Buffet | Bento | Tingkat**

 Campaign period: **1 May to 31 July'25**

Quote "feastwithlove" when ordering

Order via: www.fongfu.com.sg or hotline: 6262 6565

Here wishing all mothers a Blessed Mother's Day!



UPCOMING EVENTS (1)

YA CONNECT (YOUNG ADULTS MINISTRY)

🎉 ADVENTURERS WANTED! 🎉

Hear ye, hear ye! This YA Connect, you are invited to participate in the grand tournament: Saboteurs & Saints. Solve puzzles, take part in quests, and compete or collaborate to emerge champion! Will you help a fellow adventurer out, or seize the opportunity for a decisive victory? The story is yours to tell.

Think you have what it takes? Gather your band, bring a friend, and lead your party to victory!

Sign up by 11 May (Sunday) at: <https://forms.gle/Crh4hzD4BeqWfPAS9>



FEED301 DISCIPLESHIP MENTOR (DM) TRAINING

FEED301 helps to equip baptized and mature believers as Discipleship Mentors to follow up new believers in the faith using BCC's Becoming Disciples of Christ (BDC) booklet. This training consists of a lunch briefing on BCC's Discipleship Strategy and 4 Discipleship Mentoring Training via ZOOM.

Sign up by 22 June at: <https://bartley.ch/FEED301-DMT2/25>

FEED 301 EQUIPPING TO FOLLOW UP

Discipleship Mentor Course

Lunch Briefing on
BCC Discipleship Strategy
Date: 29 Jun [Sunday]
Time: 12.45 - 3.00pm
Place: Room 4.1



Discipleship Mentoring Training
Dates: 15, 30 Jul, 20 Aug & 17 Sep
[Tuesday & Wednesdays]
Time: 8.00 - 9.45pm
ZOOM



<https://bartley.ch/FEED301-DMT2/25>

Closing Date: 22 June 2025



UPCOMING EVENTS (2)

FEED 101 & 201 (2025 - 2nd Intake)

FEED 101 seeks to help new believers get to know God and the foundational truths of the Christian faith. It is also open to older Christians who wish to be strengthened in their basic Christian foundations. Unless otherwise approved, all candidates seeking baptism will have to complete this course before joining FEED 201 Knowing Bartley Christian Church (Newcomer, Baptism & Membership Class).

FEED 201 seeks to help participants get to know about baptism, membership and Bartley Christian Church (BCC). It primarily aims to prepare candidates for baptism and membership reception but is also open to newcomers who wish to know more about the church. Unless otherwise approved, all candidates seeking baptism have to complete FEED 101 FORMATION for Foundation before joining this course.

Register by 22 June (Sunday): <https://bartley.ch/FEED101/201-10/2025Reg>

See the full syllabus: <https://bartley.ch/FEED101/201Syllabus-2025>



F.E.E.D 101 Formation for Foundation*
(Required for Baptism)
F.E.E.D 101/201 ORIENTATION LUNCH
6 Jul 2025 (Sun)
1pm - 3:15pm
Rm 4.1, Bartley Christian Church

**1 Orientation +
6 X 1-1 Discipleship Mentoring under assigned Mentors at own
time & place*

Scan to register





F.E.E.D 201 Knowing BCC*
(Newcomers, Baptism, & Membership Class)
1 ORIENTATION: 6 Jul 2025 (Sun) 1 - 3:15pm**
4 CLASSES: 31 Aug, 14, 28 Sep, 19 Oct 2025 (Sun)
1 - 3:45pm**
Rm 4.1, Bartley Christian Church
Baptism/Membership Service:
26 Oct 2025 (Sun) 2:30pm

** All Baptism candidates must also take F.E.E.D 101
** Lunch Provided*

Scan to register



UPCOMING EVENTS (3)

FEED 217 Mentoring Through the 7 Churches & In the Step of the Apostles: Study Trip to Türkiye (23 November - 3 December 2025)

This is BCC's 4th study trip to Türkiye under the leadership and tutelage of Ps Mah Yeow Beng. It includes 3 Mandatory Pre-trip teaching/briefing sessions on 6 September, 11 October and 8 November (Saturdays 9am-1pm).

Fee per person: \$3,985.00

To ensure a place, register by 30 June 2025

FEED 217 Mentoring Through THE 7 CHURCHES & IN THE STEPS OF THE APOSTLES
Türkiye Study Trip (23 Nov - 3 Dec 2025) FEE: \$3,985/person



1) To register for trip or find out more:

<https://event.actxplorer.com/>

[Enter pw: BCC2025ATR]

2) To attend any 1 of 3 INFO SHARING sessions below, register at:

<https://bartley.ch/FEED217-InfoSharingReg>



a) **11 May (Sunday), 10:45am-12nn**
onsite in Room 4.7, Level 4, BCC

b) **11 May (Sunday), 12:45pm-2pm**
onsite in Room 4.7, Level 4, BCC

c) **28 May (Wednesday), 8pm-9:30pm**
via MS Teams Video Conferencing at:
<https://bartley.ch/FEED217InfoSharing-4>

FEED 220A How To Study the Bible I (OT)

This course covers principles of general interpretation, handling different Biblical genres, and tackling issues relating to contemporary applications. It is part 1 of 2 courses and focuses on the OT. It is also a SINGAPORE BIBLE COLLEGE (SBC) Certificate of Church Ministry (CCM) module with Bartley Christian Church (BCC) as venue-sponsor. Click [here](https://bartley.ch/FEED220A-HTSTB) to watch the intro video to this course. Register at: <https://bartley.ch/FEED220A-HTSTB>



FEED 220A How To Study the Bible I (OT)


A SINGAPORE BIBLE COLLEGE Certificate of Church Ministry module featuring:
Dr Calvin Chong
(Professor, Practical Theology, Singapore Bible College)

2, 16, 30 Aug & 20 Sep 2025
(4 Saturday Mornings)
9:00am – 1:00pm
The Meeting Point, BCC

Fee: \$70*
Early-Bird Special (by 29 Jun): \$65*

CLOSING DATE OF REGISTRATION: 20 July 2025

DETAILS & REGISTRATION
<https://bartley.ch/FEED220A-HTSTB>
(Indicate FEED220A when making payment)



*Further discounts for FEED Mentoring Thru... alumni, missionaries, unemployed, etc.

CONNECT WITH US!

»» I'M NEW and would like someone to follow up with me.

»» I would like to JOIN a Missional Cell, Young Adults Ministry, or Youth Ministry

Scan to join!



<https://bartley.ch/newcomer-response-registration>

»» I would like to get BAPTISED

»» I would like to be a MEMBER

Scan to register



<https://bartley.ch/baptism-membership>

STAY CONNECTED

Receive weekly updates, including E-bulletin, via WhatsApp broadcast. **Send a message with your full name to 8053 9400** (New BCC Broadcast number)!

Alternatively, just click on the link below to be directed to BCC WhatsApp.

<https://wa.me/message/EU3V2HMCBNC2H1>

Bartley Christian Church
WhatsApp business account



OUR Purpose

A God-loved
missional community that
worships passionately
evangelises faithfully
disciples intentionally
serves selflessly
sent out to reach the world for Christ

OUR Core Values

Believing Prayers
Accountable Relationships
Reaching Out to the Nations
Teaching the Word
Loving Families
Exercising Stewardship
Yielding to the Spirit



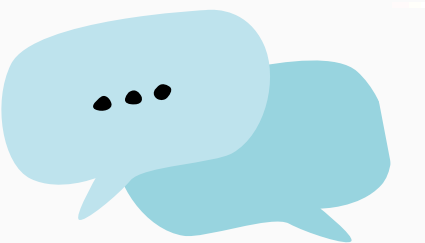
Kingdom Jewels Children Ministry

We welcome children aged 12 years & below to join our Sunday School program. If you have a child 12 years and under and would like to find out more, please visit our webpage at:

<https://www.bartley.org.sg/kingdom-jewels>.

Please contact Ps Nan at nansiew@bartley.org.sg,
PeiYun at peiyunyin@bartley.org.sg or Gerard at
gerardsu@bartley.org.sg if you have queries.

Need to talk to someone?



If you need prayer, ministry or wish to respond to God's Word, our pastors & elders will be at the front to meet with you after each service. You may also email:
info@bartley.org.sg if you have any prayer requests or wish to speak with our pastors.

If you have counselling needs, drop an email to
counselling@bartley.org.sg to request counselling from our lay counsellors.

TITHES & GIVING to BARTLEY CHRISTIAN CHURCH via Bank Transfer or PayNow (UEN):

1) For General Tithes & Offerings: DBS Account: 047-007309-0 (UEN: 197801655D)

2) For Missions (General & Designate):** DBS Account: 072-108877-0 (UEN: 197801655DMIS)

3) For PJWMEF: DBS Account: 003-911373-0 (UEN: 197801655DPJW)

**** Missions personnel codes** can be found at: <https://www.bccmissions.com/missionspersonnelcodes>
or scan the QR code on the right. Please **indicate the 3-Letter codes in the reference/remark section**
when giving to a specific missionary.



PASTORS

Senior Pastor Joseph Lee
Pastor Mah Yeow Beng (Christian Education)
Pastor Jason Lee (English Lead)
Pastor Tony Clayton Chong (English, Missional Cell)
Pastor Jonathan Ji (English, Frontline Youth)
Pastor Woo Nan Siew (English, Kingdom Jewels-Children)
Pastor Gloria Pereira (English, Young Adults)
Pastor Eric Wong (Chinese Lead)
Pastor Irene Chung (Chinese)
Pastor Clevee Go (Filipino Lead)
Pastor Kim Taehoon (Korean Lead)
Associate Pastor Alvin Tan (English)
Associate Pastor Lim Beng Hee (Chinese)
Associate Pastor Danny Modi (Telugu Lead)
Lay Pastor Solomon Adhikari (Nepali Lead)

ELDERS

Chairman Elder Lawrence Phang
Vice Chairman Elder Chua Teck Chuan
Secretary Elder Jeffrey Lee
Treasurer Elder Vikram Mengi
Elder Jeffrey Lum
Elder Ronald Yong
Elder Yew Hock Meng

MINISTRY HEADS

Missions - Serene Lim
Family Life - Li Wen Xing
Bartley Community Outreach - Matthew Chern
Kingdom Treasures, Seniors - May Kwan
Counselling - May Kwan
Indonesian Fellowship - Rose Faquir
Bartley Community Care Services - Kenneth Teo

SERVICES

SUNDAY

ENGLISH Service
9:00am & 11:00am

ENGLISH CHILDREN Ministry
10:45am

CHINESE Service
11:00am

INDONESIAN Fellowship
11:00am

KOREAN Service
11:00am & 8:00pm

NEPALI Service
1:00pm

FILIPINO Service
1:30pm

SATURDAY

FRONTLINE Youth Ministry
3:00pm

TELUGU Service
8:00pm